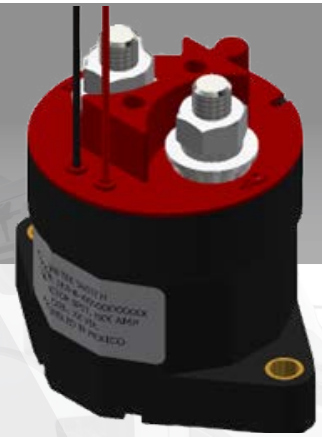


**COMING
SOON!**



HV SERIES CONTACTORS

12 - 900 V / 200 A DC Contactor

GENERAL SPECIFICATIONS:

- 1 SPST - No, Double Break Contacts
- 2 Gas Filled & Hermetically Sealed
- 3 Internal Coil Economizer
- 4 PWM Coil Option
- 5 SPST N.O. or N.C. Auxiliary Option
- 6 Wire Leads for Control Circuit
- 7 Blowout Magnets
- 8 Silver Contact Option

For more information on the HV Series Contactor, please contact your sales representative.

COMMON APPLICATIONS:

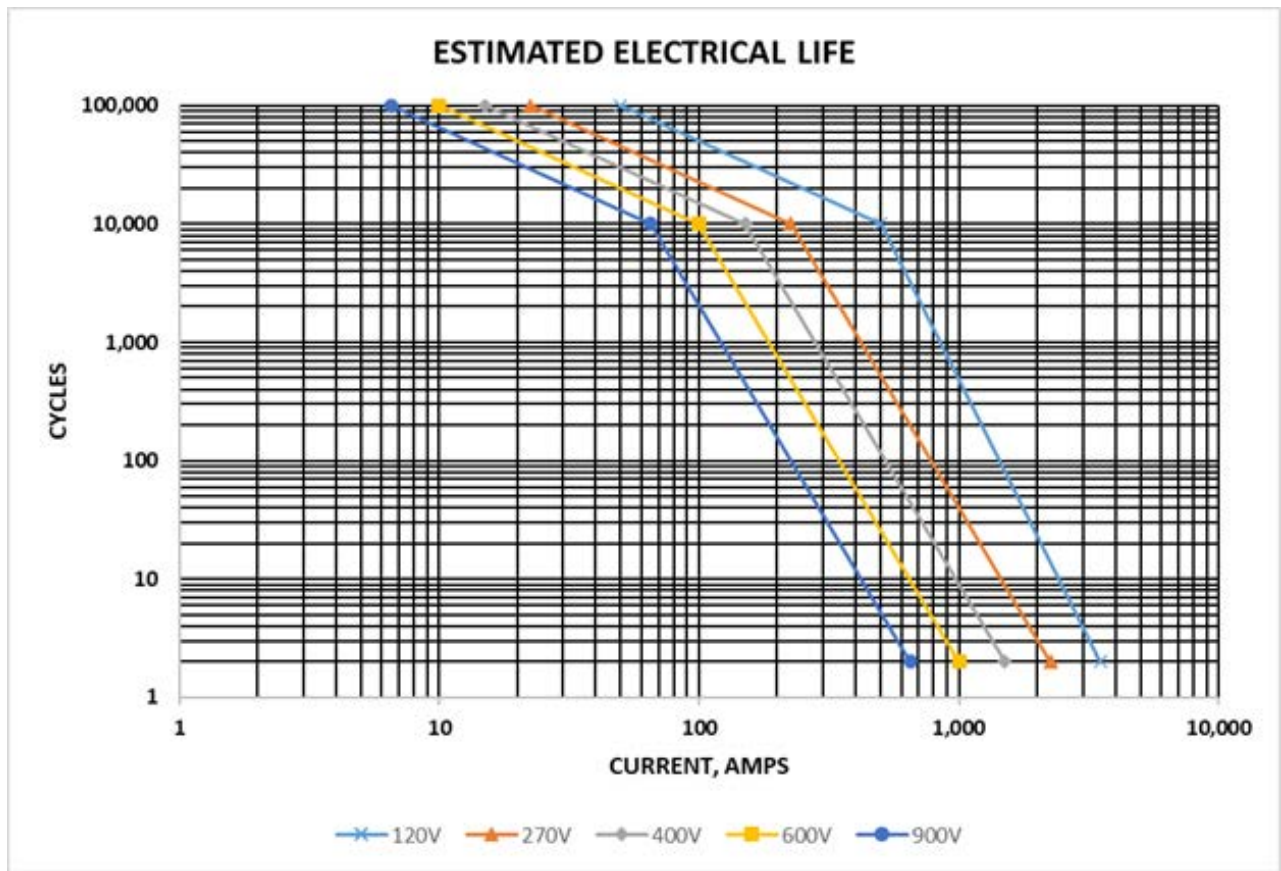
- 1 Electric Vehicles
- 2 Electric Vehicle Charging Stations

TECHNICAL SPECIFICATIONS

Main Contact Voltage	12 - 900 VDC
Continuous Current	500 A (202.7 mm ² Conductor Cross Section)
Short Circuit Current	2,000 A @ 320 VDC, 1 Cycle
Electrical Life	See Estimated Electrical Life Chart
Mechanical Life	> 1,000,000 Cycles
Operate Time	20 ms MAX.
Release Time	10 ms MAX.
Bounce Time	7 ms MAX.
Insulation Resistance	100 MΩ MIN. @ 500 VDC
Dielectric Strength	1 mA MAX. @ 2,200 Vrms
Contact voltage Drop	150 mV @ 175 A for New Contacts
Operating Temperature	-40 °F to 185 °F [-40 °C to 85 °C]
Shock	20 G, 11 ms, 1/2 SINE, Peak
Vibration - Sinusoidal	20 G, 5 - 2,000 Hz

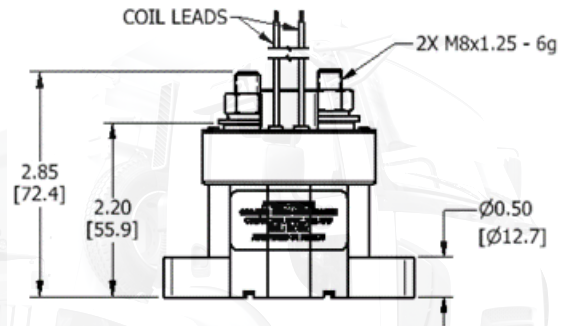
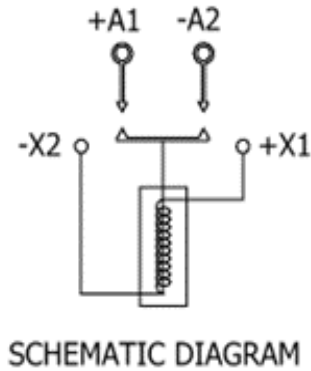
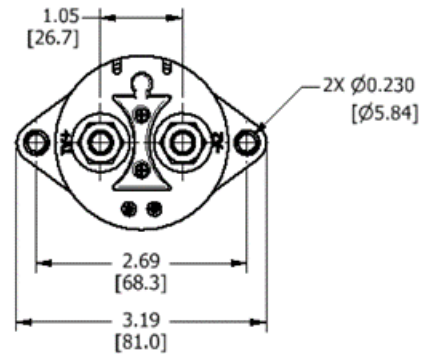
COIL RATINGS @ 77 °F (25 °C)

Coil Type	Economized	Economized	Economized	PWM
Nominal Voltage	12 VDC	24 VDC	48 VDC	9 - 36 VDC
Maximum Voltage	16 VDC	32 VDC	64 VDC	36 VDC
Pickup Voltage - MAX.	8.0 VDC	16.0 VDC	40 VDC	
Dropout Voltage - MAX.	TBD	TBD	TBD	
Resistance	2.9 Ω	15.0 Ω	49.5 Ω	3.2 Ω
Current - MAX. Inrush	4.1 A	1.6 A	0.97 A	3.8 A
Current - MAX. Hold	0.23 A	0.097 A	0.042 A	0.13 A @ 12 V (Avg.)
Power	2.8 W	2.3 W	2.0 W	



NOTES:

1. Coil leads length: 15 in. (380 mm) standard
2. Stainless steel nut, lockwasher and flat washer
3. Mounting holes have compression limiters for use with M5 or #10 mounting hardware
4. Torque Ratings:
 Mounting: 15 - 35 in.-lbs (1.7-4 Nm)
 Terminals: 90 in.-lbs (10 Nm) MAX.
5. Specifications are subject to change without notice
6. Performance data provided should be as a guide only



WORLD HEADQUARTERS **WEBSITE**
 255 North Union Street www.ametekswitch.com
 Rochester, NY 14605
 Toll Free: +1.800.843.5169
 Tel: +585.263.7700
 Fax: +585.454.7805



REV 12/2025